

Issue 2 - Term 1
10 March 2022

Principal
Tish Clarke

Deputy Principal
Tanya Cox

Contact Details:
54 James Street
Kellerberrin 6410

PH: 9045 6300
TEXT: 0437 202 819

EMAIL: Kellerberrin.dhs@
education.wa.edu.

Bunuru Season

February - March

Hottest part of the year
with sparse rainfall and
warm easterly winds



**Kellerberrin
District High School**
Sow knowledge, harvest success

Kellerberrin District High School

Chalkdust Chat

YOUR GUIDE TO THE SCHOOL NEWS, INFORMATION AND EVENTS



Term One T Baling Techniques



From the Principal

Kaya! Wanjool!

The landscape of early 2022 is proving to be one that has all sorts of bumps, twists and turns. I can't thank our school community enough for their support throughout the challenges that we are facing.

It has been heartening also to see our learners adapt so readily to the restrictions that they now need to adhere to at school. As a school community, we need to be proud of each other and the way in which we are all prepared to do the right thing to protect ourselves and each other.

Today, as we move into Very High Caseload settings; new close contact protocols come into effect in schools. Please refer to the following infographic for further details.

Please inform the school by phone during business hours or via email kellerberrin.dhs@education.wa.edu.au after hours, if you or someone in your household tests positive for COVID-19 or when you have been identified as a close contact and have been directed to isolate. This vital information allows us to provide continuity of learning (learning at home) for affected students.

It is vitally important to us that we share school celebrations with our school community. We were scheduled to host the Year 3/4 and Pre-Primary-Year 1 assembly on Wednesday 6th April, but we have made the decision to postpone this assembly until term two. All going well, this will mean that our families and special friends will be able to attend and watch the assembly live. You being able to attend means so very much so our learners and staff.

Whilst we remain somewhat physically disconnected, I encourage you to reach out via phone or email should you need to ask a question, raise a concern or pass on some positivity. Our communication will look different for a little while yet as we navigate the restrictions however, we remain committed to keeping you informed and connected with your learner's journey. Please reach out to us.

Tish Clarke
PRINCIPAL

COVID-19 protocols for schools and childcare centres

In line with the high caseload settings announced last month, the new close contact definition and new testing and isolation protocols will take effect from tomorrow, Tuesday, 8 February

New definition of close contact with a positive case in a school or childcare setting:



Interaction for more than two hours in a small indoor space or classroom environment with an infectious person, where masks have been removed for this period

OR



Face-to-face contact for 15 minutes or more with an infectious person, where a mask was not worn by the exposed person or the person with COVID-19

OR



Someone who has been notified by WA Health that they are a close contact.

New positive COVID-19 case protocols:



Report

If PCR test unavailable, report positive RAT to WA Health



Self-isolate

Self-isolate for a minimum of 7 days



Have symptoms on Day 7

Continue isolating until symptoms clear



No symptoms after Day 7

If no symptoms after Day 7, leave self-isolation
No test is required

More information at www.wa.gov.au

To ensure our community stays safe;

All adults and Year 3–10 students must wear a mask whilst visiting or working in indoor spaces in the school.

If your child is unwell, please keep them home until their symptoms subside.

Text absences to
0437 202 819

Our old school phone number is no longer being diverted automatically. Please ensure you have updated our new number on your phone.

90456300

KELLERBERRIN P & C

AGM

Notice is hereby given for the Annual General Meeting.

Wednesday, 16th March 2022

9am

School Library 📖

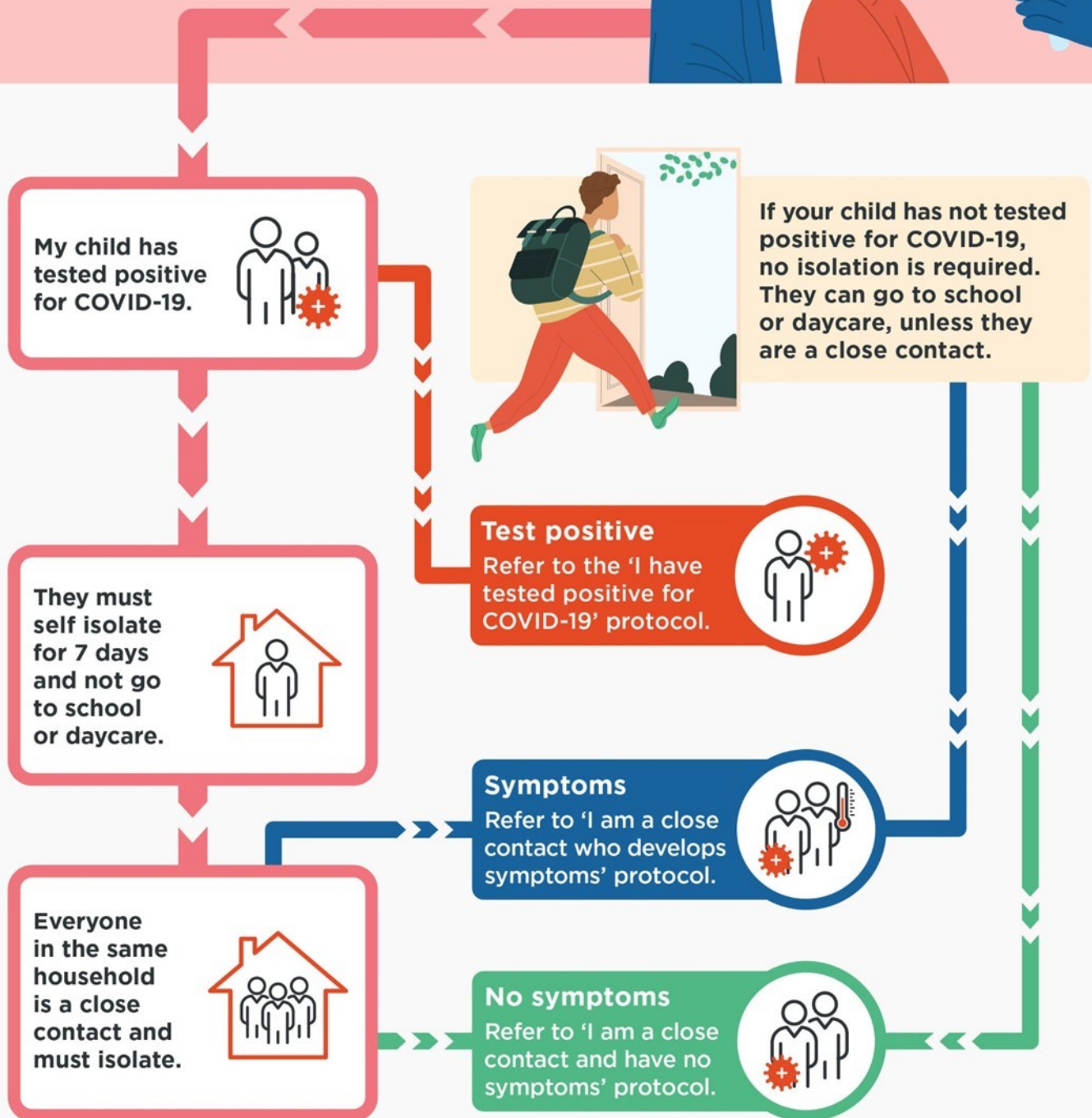
COVID rules of mask wearing & social distancing will apply

Contact: kellerberrinpandc@gmail.com



COVID-19: My child has tested positive

If your child has tested positive for COVID-19 they must isolate for 7 days.





As we are still in Bunuru season here is a few more facts about the season, Bunuru is the hottest time of the year with little to no rain. Hot easterly winds continue with a cooling sea breeze most afternoons, if you're close to the coast.

Traditionally this was, and still is, a great time for living and fishing by the coast, rivers and estuaries. Because of this, freshwater foods and seafood made up major parts of the Noongar people's diet during Bunuru.

Colours in Noongar

Black – Moorn

Red – Mirda

Yellow – Yoont

Pink- Mirda – Djardak

Green–Nodjam/Dordong

Purple – Mirda – Wooyan

Orange – Mirda – Yoont

Blue – Wooyan

Grey – Djendal

Brown - Djedari

Native Australian Animals in Noongar

Kangaroo – Yonga

Emu – Waitj

Goanna – Karda

Echidna – Nyingarn

Willy Wag Tail – Djidi Djidi

Black Swan - Marli



Marleena McIntosh--AIEO

inkl.com

HARMONY DAY

Everyone Belongs

21 MARCH 2021

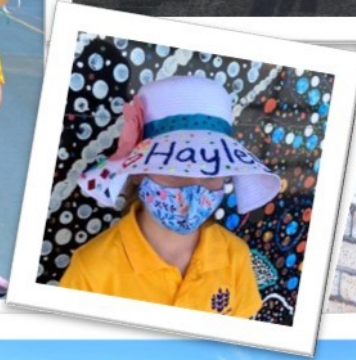


You are invited
to celebrate
Harmony Day
by wearing orange.

Monday 21st March



Student Leadership Team Fundraising



Save the Date!
Dress Up Days:
21 March - Wear Orange
for Harmony Day
31 March - Loud Shirt Day
& Crazy Cupcake Stall

Middle School Students In Action



Manual Arts

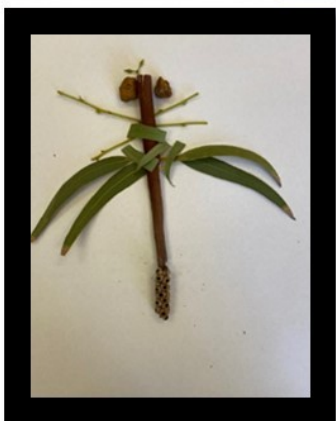


**\$20 BOSS
Program**

YEAR 9/10 ART

Raku Inoue Japanese Artist

Raku Inoue is a Japanese artist living in Montreal. The year 9/10 class have been studying his works and recreating their own versions. Check out their fabulous work below. The next stage of their work is to make a sculpture of their chosen insect.



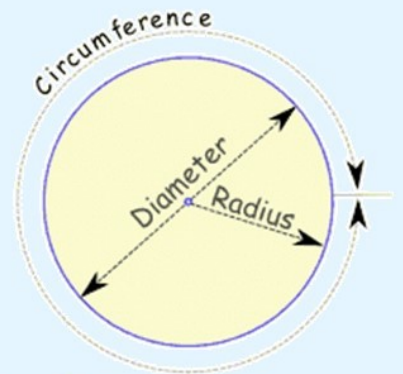
EVERY
CHILD
IS AN
ARTIST
-PICASSO

Pictures Quotes.com



KDHS MATHS MANIA Pi Day

Every year on March 14, the world celebrates Pi Day to recognise the mathematical constant, Pi. It defines as the ratio of a circle's circumference to its diameter and the value for Pi is 3.14. Pi Day was founded by Physicist Larry Shaw in 1988.



If you would like to check out some fun maths Pi-Day activities please go to:

$$\frac{\text{Circumference}}{\text{Diameter}} = \pi = 3.14159...$$

<https://mathgeekmama.com/math-resources/pi-day-goodness/>

FRIDAY LUNCH ORDERS

The Kellerberrin Pie Shop and Bakery kindly supply our students the option to purchase their lunch on Fridays.

Lunches can be directly ordered and paid for at the Kellerberrin Pie Shop and Bakery or via the front office.

Friday Lunch Menus have been sent home with students. Please return your orders to the school office in an envelope clearly marked with name, order and money enclosed.



Faction Swimming Carnival

Congratulations
BUNURU

On Wednesday, March 3rd we hosted our Faction Swimming Carnival. Thank you to all of our parents for your help at the event, to all staff for support on the day and leading up to the event, Mr Arthur and the Shire for providing access to the facility.

Congratulations to all of our learners for their adaptability and seeking challenge on a wet and cold day. It was heart-warming to hear our students cheering on their peers, saying they will try their best and give it a go.

Congratulations to Bunuru for wining the Faction Shield.

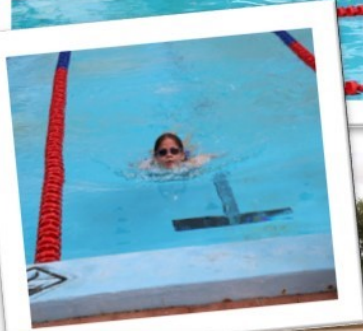
Individual results

Year 3/4 Girls	Champion:	Charlie Ryan
	Runner up:	Hayley Tiller
Year 3/4 Boys	Champion:	Rhys Askew
	Runner Up:	Henry Isaacs
Year 5/6 Girls	Champion:	Maya Ryan
	Runner Up:	Tamara Kalogeropoulos
Year 5/6 Boys	Champion: Equal	Wyatt Moylan & Liam Askew
	Runner Up: Equal	Coby Saunders & Victor Isaacs
Middle School Girls	Champion	Temily Daddow
	Runner Up	Rikki Garlett
Middle School Boys	Champion	Cameron Saunders
	Runner Up	Archie Lawrence

Records

Archie Lawrence	Middle School Freestyle -50.84
Cameron Saunders	Middle School Breastroke -1.12.16
Ethyn Trewren	Middle School Butterfly -1.15.19
Jeffrey Legge	Middle School; Boys Backstroke-1.12.40
Temily Daddow	Middle School Butterfly- 1.08.03
	Middle School Freestyle - 51.58
Rikki Garlett	Middle School Backstroke 1.20.60
Djilba	Mixed Relay Year 5/6 2.20.16



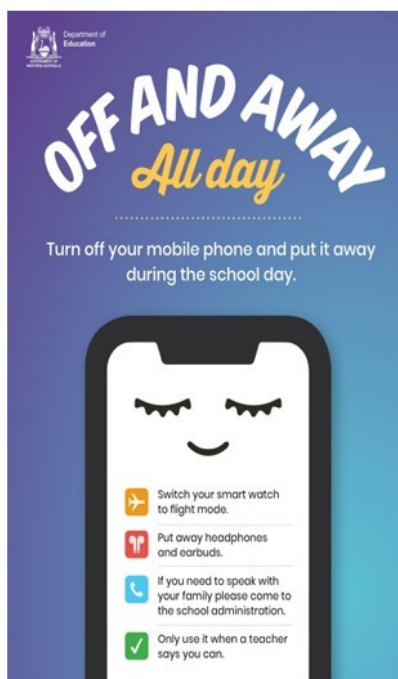


TERM PLANNER—TERM 1

	Monday	Tuesday	Wednesday Early Close Day 2.30pm	Thursday	Friday
7	14	15	16 P & C AGM Library 9am	17	18
8	21 <i>Wear Orange</i> Harmony Day  World Poetry Day March 21	22 School Board Meeting 6pm	23	24 Co-ordinated NAPLAN Practise test	25  Ride 2 School Day
9	28	29	30 	31 St Leadership Loud Shirt Day + Crazy Cupcake-biscuit stall	1 April

SCHOOL TIMES

Start of Day	8:50am
Recess	11:00am
Crunch & Sip	12:00pm
Lunch	1:30pm
End of Day	3:00pm
<i>(Mon, Tue, Thu & Fri)</i>	
Early Close Day	2:30pm
<i>(Wednesdays only)</i>	



Department of Education

OFF AND AWAY

All day

Turn off your mobile phone and put it away during the school day.



- Switch your smart watch to flight mode.
- Put away headphones and earbuds.
- If you need to speak with your family please come to the school administration.
- Only use it when a teacher says you can.

SCHOOL UNIFORMS



SCHOOL UNIFORM SHOP OPEN

TUESDAYS
8.30—9.00

Order Forms are available from the front office, special thanks to your P&C Uniform Coordinator Jacki for helping us.

VOLUNTARY CONTRIBUTIONS 2022

The Western Australian Government's priority is to ensure that all students are able to access an education program that satisfies the requirements of the Western Australian Curriculum, within the prescribed maximum contribution of \$60 for students enrolled in Kindergarten to Year 6 and \$235 for Years 7-10.

Your contribution will be used to supplement school funding for the purchase of resources needed in the provision of the learning program activities.

PAYMENT OPTIONS

- EFT - Kellerberrin District High School
BSB: 086 732
Account No: 454000427
Reference: child's name
- Cash or Cheque
- Eftpos available at the front office

SECONDARY ASSISTANCE SCHEME

YEARS 7 TO 12
YOU MAY BE ELIGIBLE FOR UP TO:

\$350
towards school expenses

DO YOU HOLD A: ● CENTRELINK HEALTH CARE CARD
(OR) ● CENTRELINK PENSIONER CONCESSION CARD
(OR) ● VETERANS' AFFAIRS PENSIONER CONCESSION CARD

Applications Close
Friday 8 April 2022

Ask School Reception for More Information